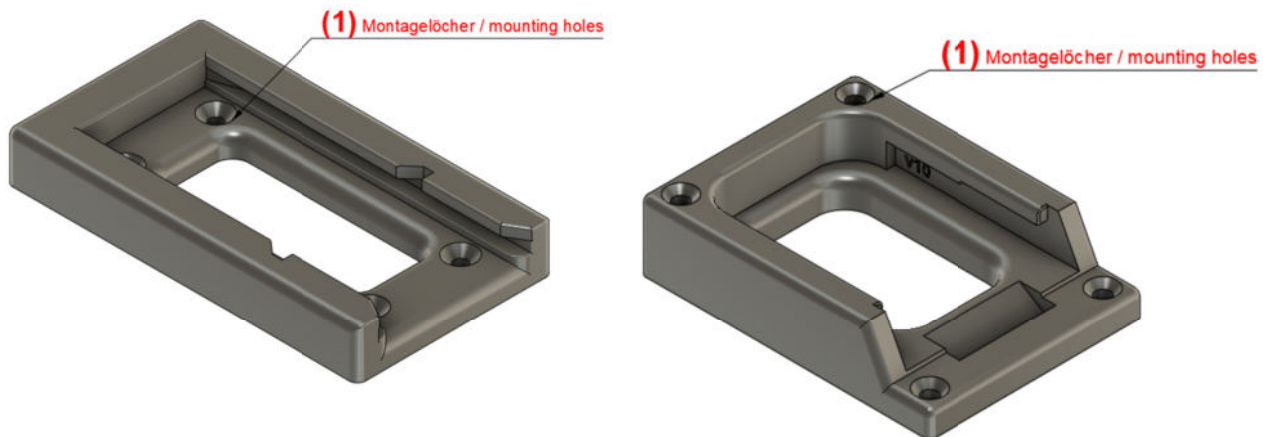


operating instructions

This manual is valid for the following battery holder series:

	article number
Aldi Spread 20-40V	110024
Bosch GET IT	110010
Bosch PBA	110036
Einhell X-Change	110014
Hilti B12	110099
Hilti B22 and B36	110003, 110069
Hilti B22 Only	110086
Dewalt	110054
Lidl X20V	110042
Lux AK-20	110077
See BL10xx	110050
See BL14xx / BL18xx	110005, 110053
Metabo 18V/36V	110062, 110063
Milwaukee M18	110011
Milwaukee M28	110065
Powerworks	110097
Worx	110098

PALO – Design Akkuhalter.de



example pictures

1. Intended Use

These battery holders are only intended for attaching the respective batteries.
Possible mounting locations are:

- workshops
- vehicles
- Hobby rooms
- ...

2. General safety instructions

- Do not use outdoors, avoid moisture and high temperatures.
- Only use the holder with the intended battery model.
- Do not use the device if it is damaged or cracked.
- Modifications to electrical devices may only be carried out by qualified personnel.
- **Improper use may cause damage.**

PALO – Design Akkuhalter.de

3. commissioning / installation

- The adapter is attached using screws in the mounting holes provided (1).

4. use

- Insert your battery into the battery holder until it clicks into place.
- The battery is now firmly secured to the holder.
- The battery can be removed again by pressing the release button.